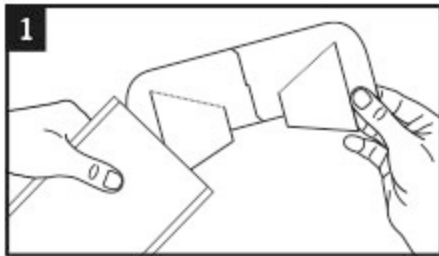
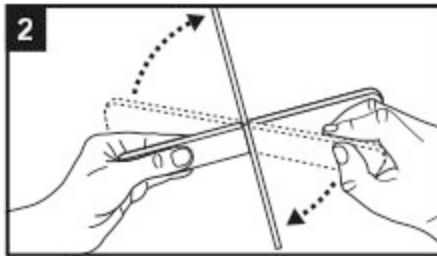


Please read the collection and testing instructions carefully before use.

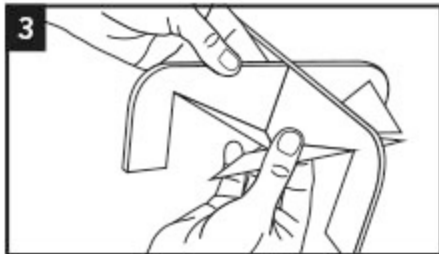


STARTING AT THE NOTCH, TEAR OPEN THE TOP OF THE FOIL POUCH AND REMOVE THE COLLECTION DEVICE.

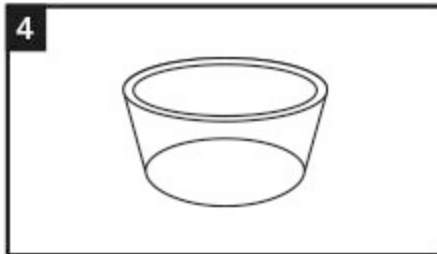
NB: THE DEVICE HAS A STRONG ODOUR.



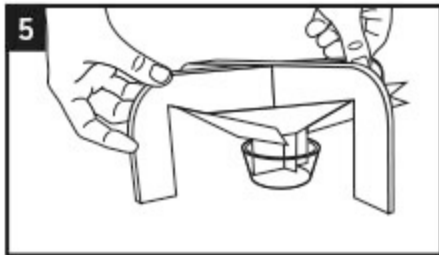
HOLD THE FLAT URINE COLLECTION DEVICE AS SHOWN AND OPEN IT UP TO CREATE A CROSS SHAPE.



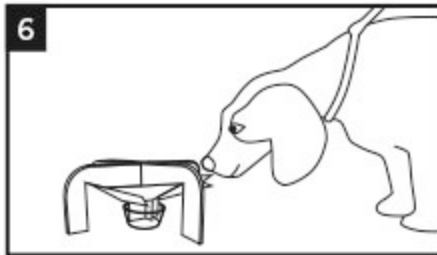
FOLD THE FLAPS UPWARDS ALONG THE CREASES ON EACH OF THE FOUR SECTIONS (8 FLAPS TOTAL) TO CREATE A FUNNEL SHAPE.



TAKE THE PLASTIC COLLECTION CUP AND PLACE IT SECURELY ON THE GROUND.



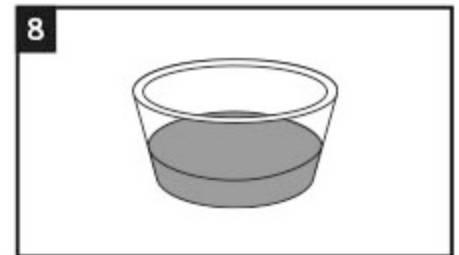
ALIGN THE COLLECTION DEVICE OVER THE CUP AND INSERT THE CENTRAL FUNNEL SECTION INTO THE CUP.



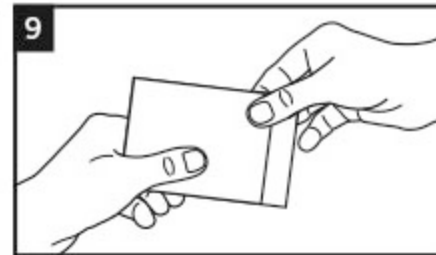
PRESENT THE DOG ON A LEAD TO THE COLLECTION DEVICE. THE DEVICE'S ODOUR WILL ENCOURAGE THE DOG TO URINATE ON IT.



USING THE PROTECTIVE GLOVES REMOVE THE COLLECTION DEVICE FROM THE COLLECTION CUP.



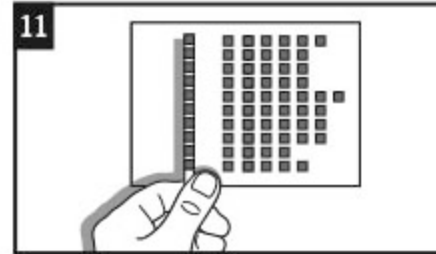
ONLY A SMALL AMOUNT OF URINE IS REQUIRED FOR TESTING.



TEAR OPEN THE SMALL AIRTIGHT POUCH AND TAKE OUT A URINE REAGENT STRIP.



IMMERSE THE REAGENT AREA OF THE STRIP INTO THE URINE SAMPLE. REMOVE THE STRIP AFTER 1-2 SECONDS.



COMPARE THE COLOUR CHANGE OF THE TEST STRIP TO THE REFERENCE COLOUR CHART SUPPLIED.

THE RESULTS ARE READY TO VIEW AFTER 2 MINUTES.

NB: THE USED HYGIECATCH COLLECTION DEVICE AND URINE TEST STRIPS ARE SAFE FOR DISPOSAL IN STANDARD WASTE.

This convenient urine test kit has been developed for use by both professional veterinarians and dog owners.

If the results from your dog's test strip do not match the FIRST COLUMN of the reference chart you are advised to seek veterinary advice.